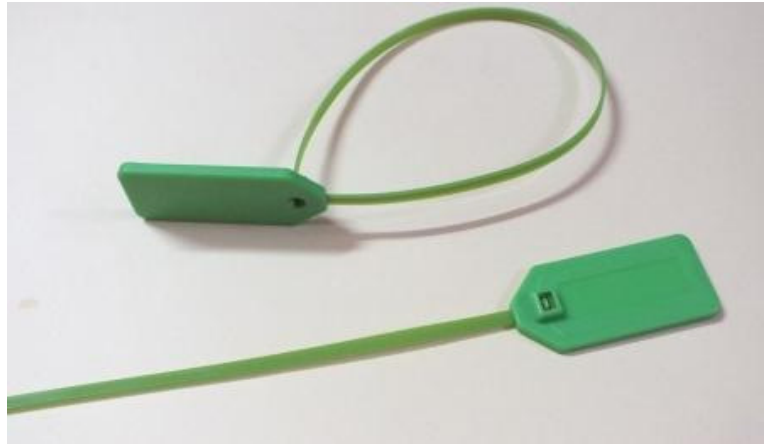


TIE-TAG

UHF Tie Tag

Tie-tag is an RFID tag, compatible with the EPC Class 1 Gen 2 (ISO18000-6C) standards. It is quite suitable for metal/non-metal assets in outdoor or harsh environment. Its unique attachment method makes it ideal to attach to assets where riveting or pasting with adhesive is not possible.

The tag can be customized with a steel tie and customer branding/laser marking.



100% read-tested tags with industry best RFID Impinj M730 / NXP U9 chips. These tags are available in different colors and can be customized with customer branding.

RECOMMENDED APPLICATIONS

Cable/Pipes Tracking

RFID is a favoured method of tracking returnable cables, pipes and pallets in logistics. Quickly and easily account for all assets such as crates, bins, or any other non-metallic assets by handheld/fixed reader scanning an RFID encoded tag applied to the assets. WL24U is the optimal solution for your asset tracking needs.



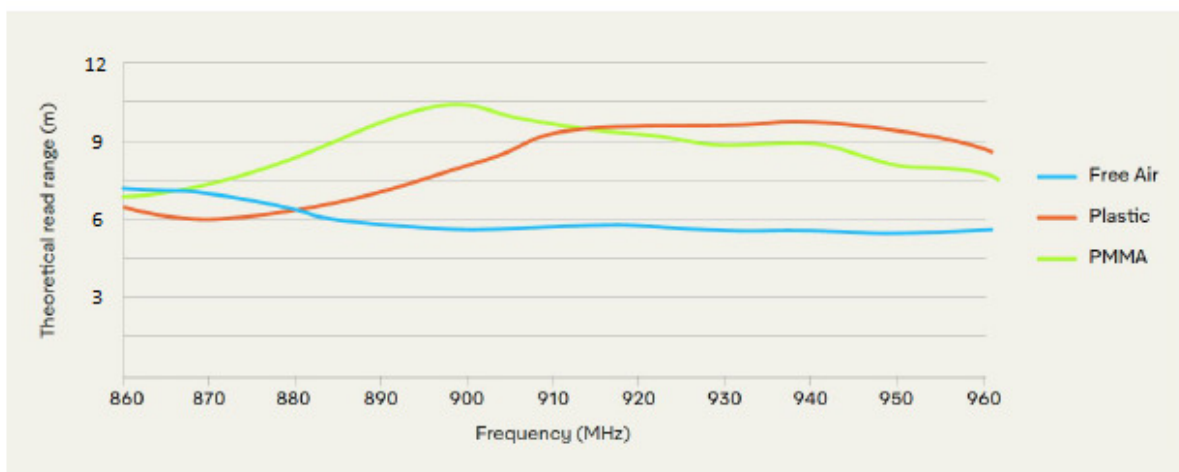
Other Applications:

Supply chain, inventory management.

Specifications

Part no.:	WL24U
Operating Frequency :	840-960 MHz (GLOBAL)
Operating Mode :	Passive (battery-less transponder)
Read Range :	up to 5m*
Protocol :	ISO/IEC 18000-6C
Chip Type :	Impinj M730/U9; EPC Class 1 Gen 2
Memory :	EPC 128/96 bits 48-bit Tag Identifier (TID) factory locked User Memory 0 bit
Data retention :	Up to 10 years
Dimensions :	62 x 28 x 4mm (Box)
Material :	ABS/PC
Ingress Protection :	IP67
Operating Temp. :	-10°C to +85°C
Storage Temp. :	-10°C to +65°C
Quality Assurance :	100% read-tested
Optional services :	Logo Printing and Encoding

Read range



© 2021 Wavelinx Technologies Pvt Ltd. All rights reserved.
Third party trademarks and/or trade names used herein are the property of their respective owner(s).